

# MCP Series / серия

ISO 6431 or / или UNITOP



- Magnetic version as standard
- Special client's version upon request
- Tandem and multi-position version available upon request

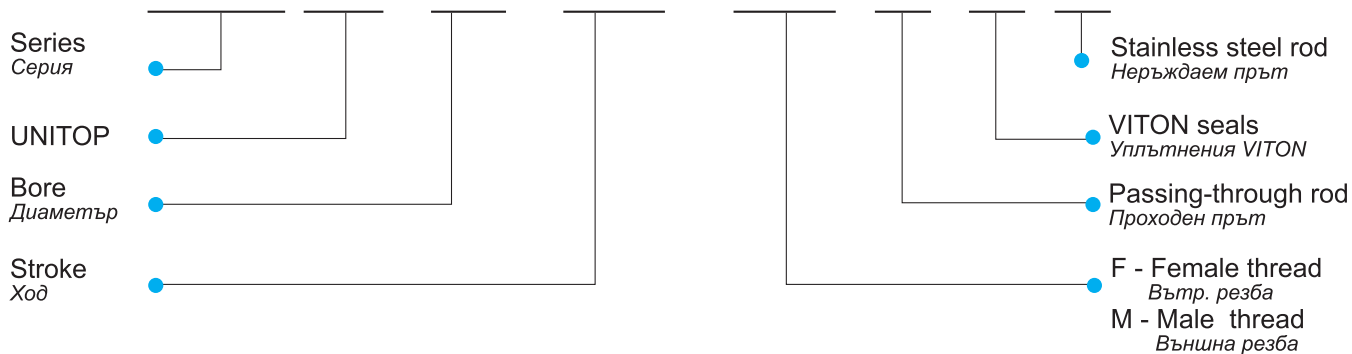
Bores <i>Диаметър</i>	32; 40; 50; 63; 80; 100;
Working pressure <i>Работно налягане</i>	Max 10 bar Max 1 MPa
Fluid <i>Работен флуид</i>	50 µm filtered, lubricated or non-lubricated air <i>50 µm филтриран, сух, омаслен или неомаслен въздух</i>
Temperature range <i>Температурен диапазон</i>	NBR: max +60°C VITON: max +110°C
Construction type <i>Тип конструкция</i>	Square aluminum profile <i>Профилна алуминиева елоксирана тръба</i>
Magnet <i>Магнит в буталото</i>	Standard for the whole range <i>Стандартно за цялата серия</i>

COMPACT

## PRODUCT NUMBER

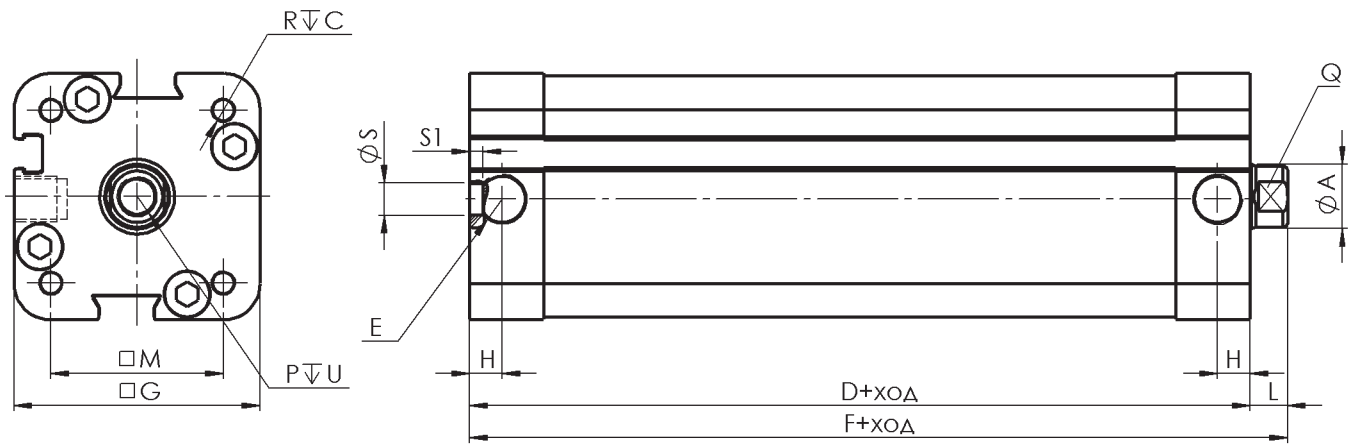
ПРОДУКТОВ КОД

### MCP(U) - 32 - 200 - F/M - P - V - X

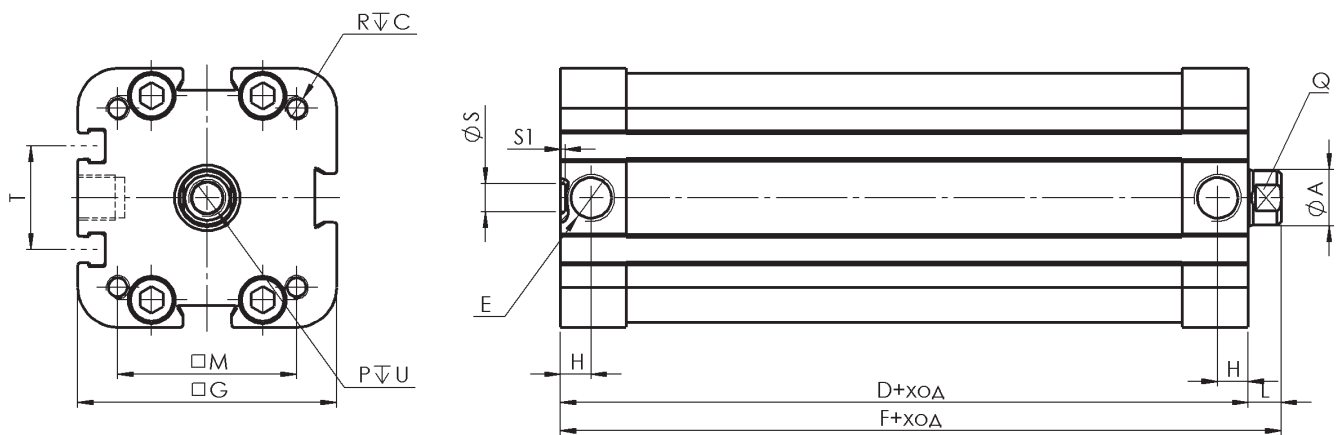


# MCP Series / серия

ISO 6431 or / или UNITOP



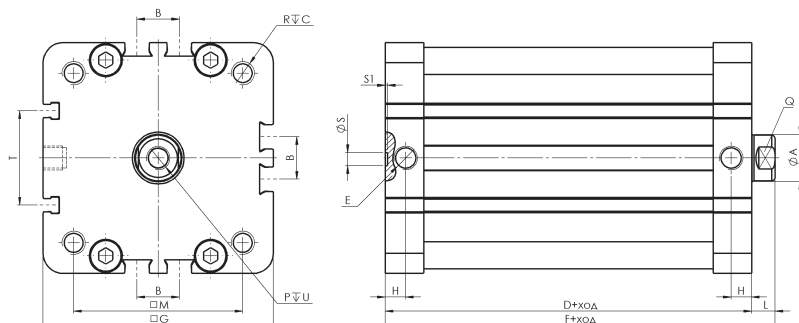
Ø	A	C	D	E	F	G		H	L	M		P	Q	R		S	S1	U
						ISO	UNITOP			ISO	UNITOP			ISO	UNITOP			
32	12	14	46	G1/8"	53	46	46	7	7	32,3	32,3	M8	10	M6	M6	6,0	2,5	14



Ø	A	C	D	E	F	G		H	L	M		P	Q	R		S	S1	T	U
						ISO	UNITOP			ISO	UNITOP			ISO	UNITOP				
40	12	14	46	G1/8"	53	55	55	6,5	7	38	42	M8	10	M6	M6	6	2,5	22	14
50	16	16	50	G1/8"	58	64,5	64,5	8	8	46,5	50	M10	13	M8	M8	6	2,5	24	16
63	16	16	53	G1/8"	61	78	78	8	8	57	62	M10	13	M8	M10	6	2,5	29	16

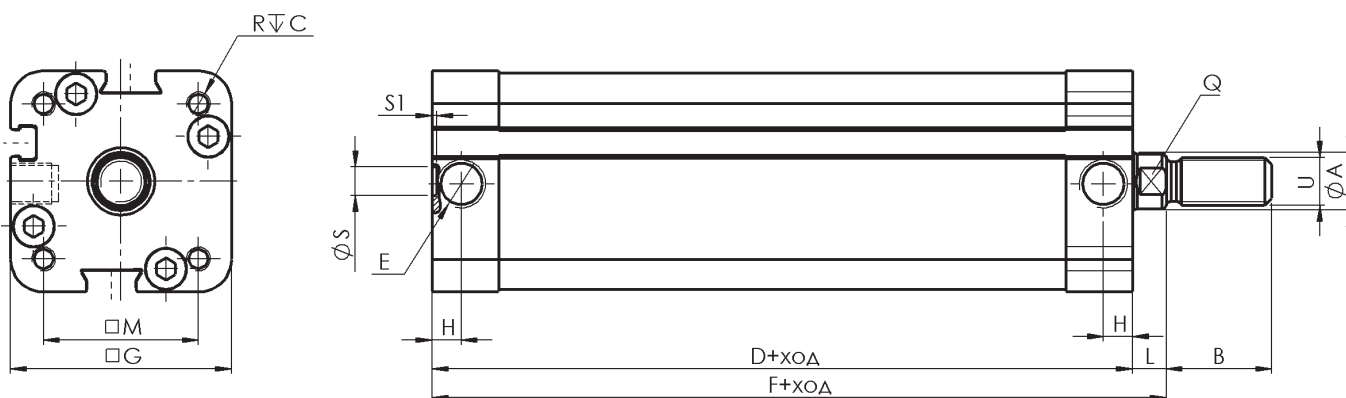
# MCP Series / серия

ISO 6431 or / или UNITOP



Ø	A	C	D	E	F	G		H	L	M		P	Q	R		S	S1	T	U
						ISO	UNITOP			ISO	UNITOP			ISO	UNITOP				
80	20	18	56	G1/8"	66	99	99	8	10	72	82	M10	17	M10	M10	8	4	40	20
100	25	18	67	G1/4"	77	119	119	9	10	89	103	M12	22	M10	M10	8	4	40	24

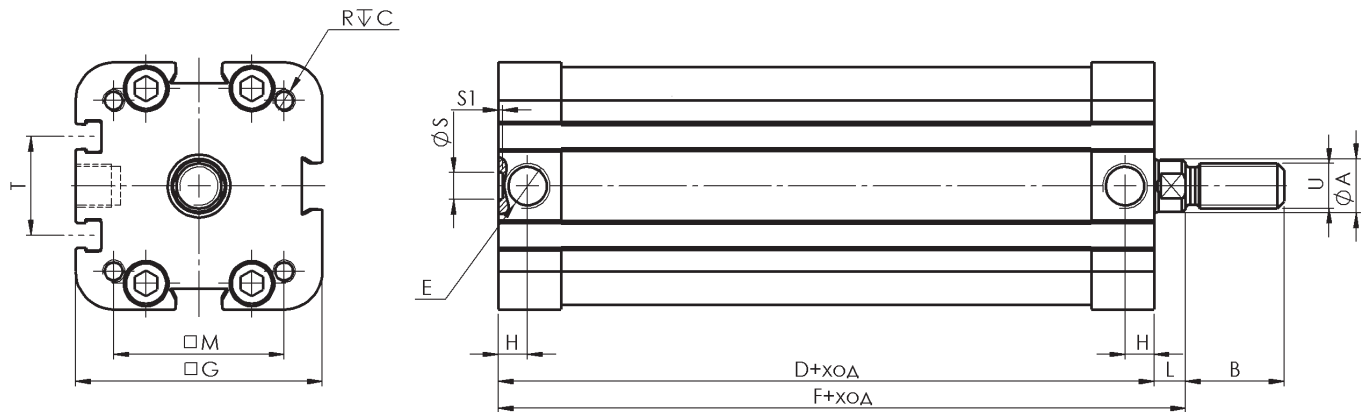
COMPACT



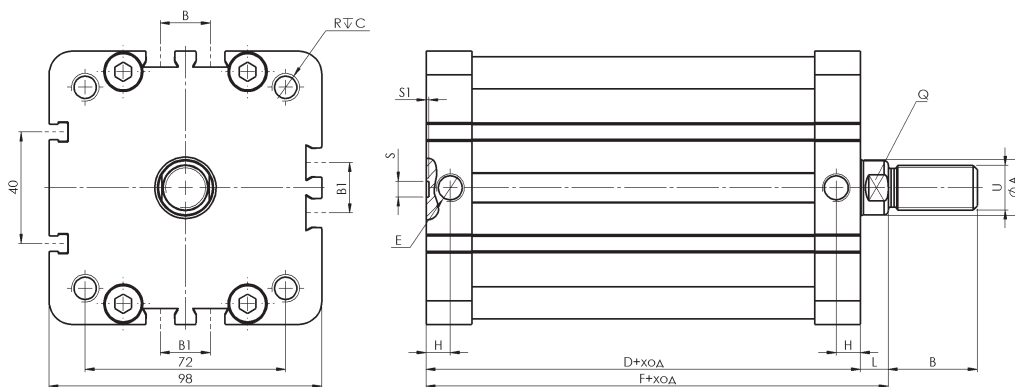
Ø	A	B	C	D	E	F	G		H	L	M		Q	R		S	S1	U
							ISO	UNITOP			ISO	UNITOP		ISO	UNITOP			
32	12	22	14	46	G1/8"	53	46	46	7	7	32,3	32,3	10	M6	M6	6,0	2,5	M10x1,25

# MCP Series / серия

ISO 6431 or / или UNITOP



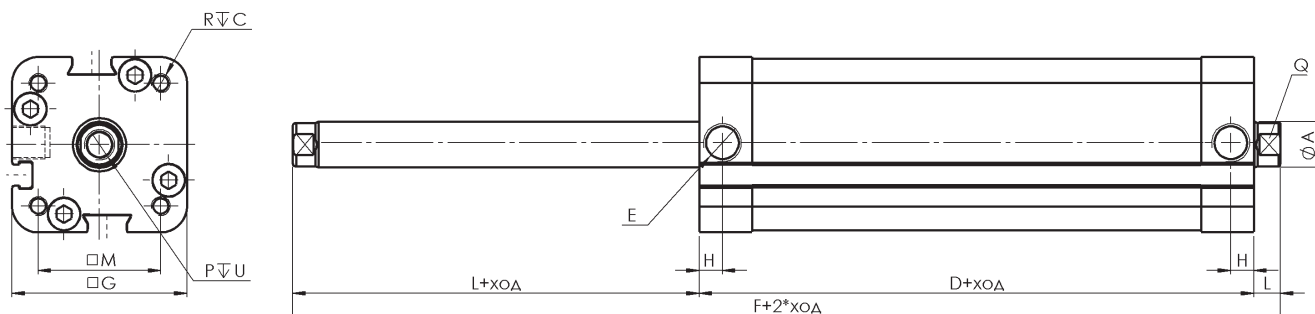
Ø	A	B	C	D	E	F	G		H	L	M		Q	R		S	S1	T	U
							ISO	UNITOP			ISO	UNITOP		ISO	UNITOP				
40	12	22	14	46	G1/8"	53	55	55	6,5	7	38	42	10	M6	M6	6	2,5	22	M10x1,25
50	16	24	16	50	G1/8"	58	64,5	64,5	8	8	47	50	13	M8	M8	6	2,5	24	M12x1,25
63	16	24	16	53	G1/8"	61	78	78	8	8	57	62	13	M8	M10	6	2,5	29	M12x1,25



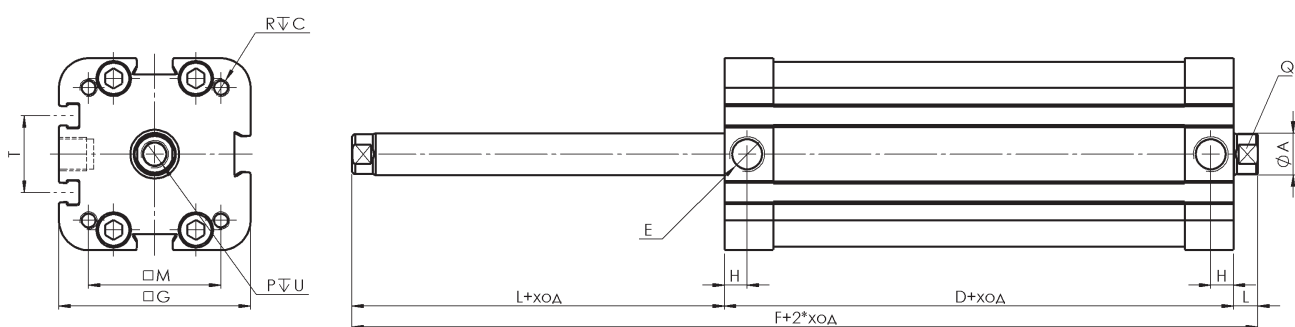
Ø	A	B	B1	C	D	E	F	G		H	L	M		Q	R		S	S1	T	U
								ISO	UNITOP			ISO	UNITOP		ISO	UNITOP				
80	20	32	18	17	56	G1/8"	66	99	99	8	10	72	82	17	M10	M10	8	4	40	M16x1,5
100	25	40	28	17,5	67	G1/4"	77	119	119	9	10	89	103	22	M10	M10	8	4	40	M20x1,5

# MCP Series / серия

ISO 6431 or / или UNITOP



Ø	A	C	D	E	F	G		H	L	M		P	Q	R		U
						ISO	UNITOP			ISO	UNITOP			ISO	UNITOP	
32	12	14	46	G1/8"	60	46	46	7	7	32,3	32,3	M8	10	M6	M6	13,5

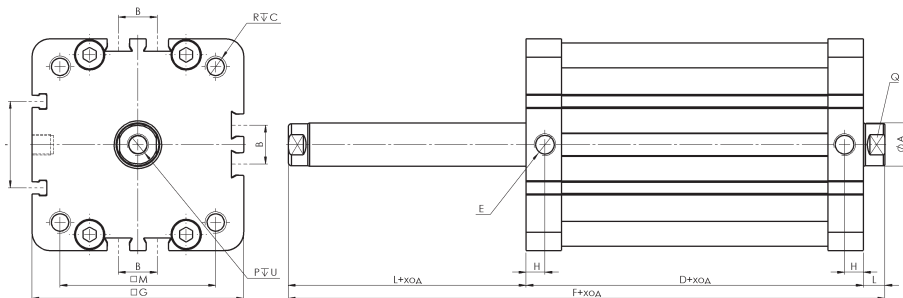


Ø	A	C	D	E	F	G		H	L	M		P	Q	R		T	U
						ISO	UNITOP			ISO	UNITOP			ISO	UNITOP		
40	12	14	46	G1/8"	60	55	55	6,5	7	38	42	M8	10	M6	M6	22	13,5
50	16	16	50	G1/8"	66	64,5	64,5	8	8	46,5	50	M10	13	M8	M5	24	16
63	16	16	53	G1/8"	69	78	78	8	8	57	62	M10	13	M8	M10	29	16

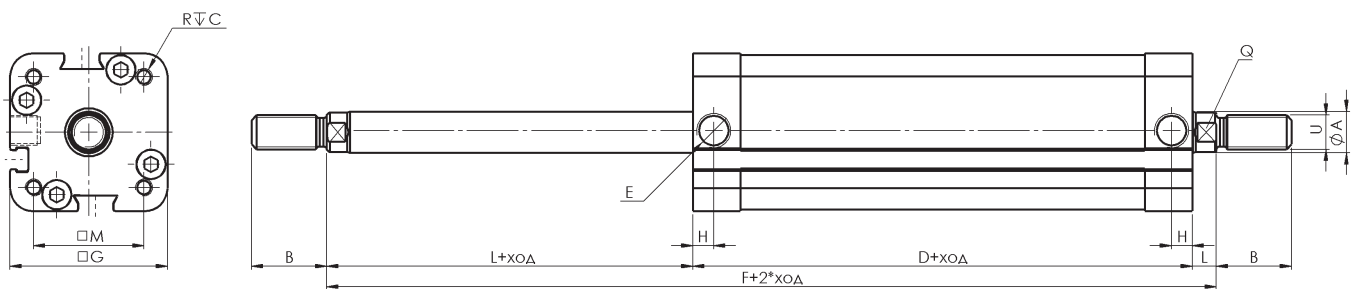
COMPACT

# MCP Series / серия

ISO 6431 or / или UNITOP



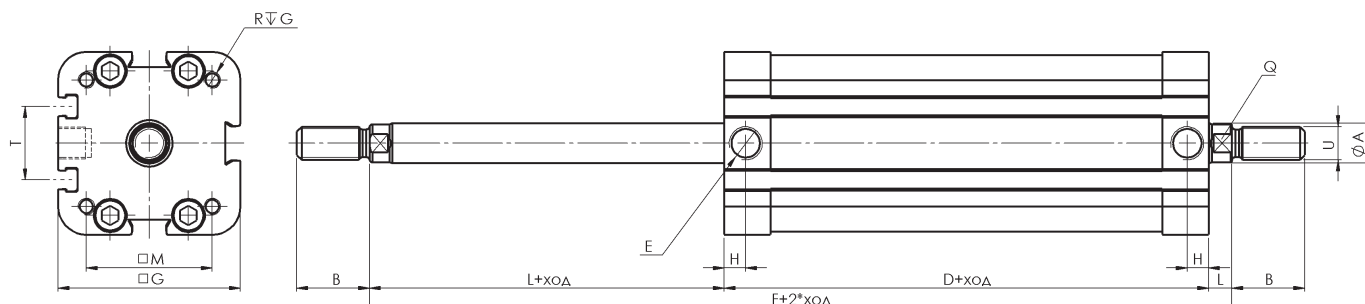
Ø	A	B	C	D	E	F	G		H	L	M		P	Q	R		T	U
							ISO	UNITOP			ISO	UNITOP			ISO	UNITOP		
80	20	18	17	56	G1/8"	76	99	99	8	10	72	82	M10	17	M10	M10	40	20
100	25	18	17,5	67	G1/4"	87	119	119	9	10	89	103	M12	22	M10	M10	40	24



Ø	A	B	C	D	E	F	G		H	L	M		Q	R		U
							ISO	UNITOP			ISO	UNITOP		ISO	UNITOP	
32	12	22	14	46	G1/8"	60	46	46	7	7	32,3	32,3	10	M6	M6	M10x1,25

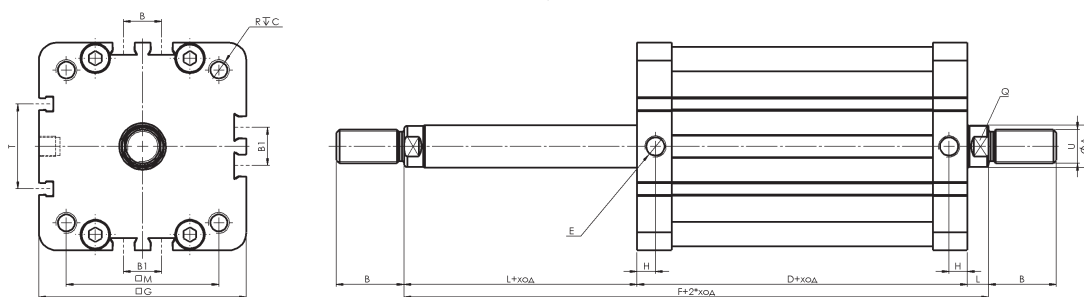
# MCP Series / серия

ISO 6431 or / или UNITOP



Ø	A	B	C	D	E	F	G		H	L	M		Q	R		T	U
							ISO	UNITOP			ISO	UNITOP		ISO	UNITOP		
40	12	22	14	46	G1/8"	60	55	55	6,5	7	38	42	10	M6	M6	22	M10x1,25
50	16	24	16	50	G1/8"	66	64,5	64,5	8	8	46,5	50	13	M8	M5	24	M12x1,25
63	16	24	16	53	G1/8"	69	78	78	8	8	57	62	13	M8	M10	29	M12x1,25

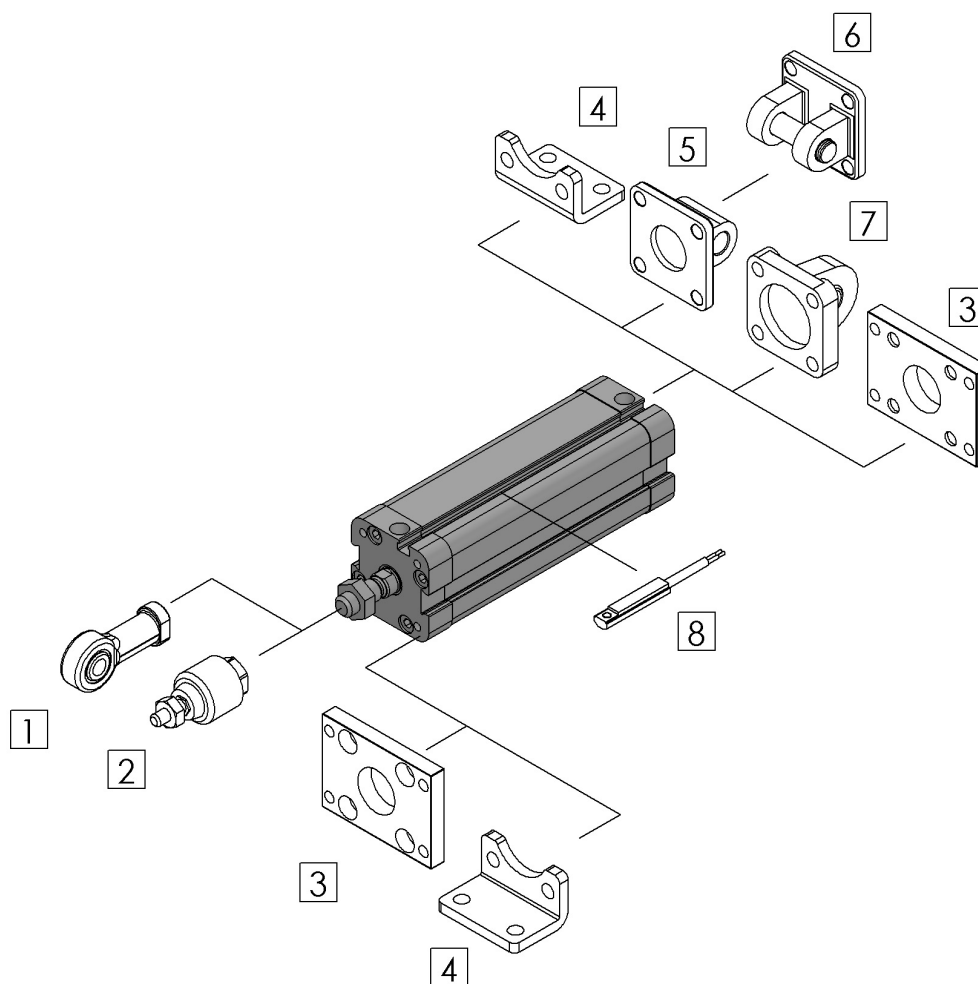
COMPACT



Ø	A	B	B1	C	D	E	F	G		H	L	M		Q	R		T	U
								ISO	UNITOP			ISO	UNITOP		ISO	UNITOP		
80	20	32	18	17	56	G1/8"	76	99	99	8	10	72	82	17	M10	M10	40	M16x1,5
100	25	40	28	17,5	67	G1/4"	87	119	119	9	10	89	103	22	M10	M10	40	M20x1,5

# MCP Series / серия

ISO 6431 or / или UNITOP



№		Accessories Акcesoари	Page Стр.
1.	PHS	Jointing ball Ухо със сферичен лагер	40
2.	MFC	Floating joint Флексо-куплунг	40
3.	FA	Flange Фланец	41
4.	LB	Foot Опора	41

№		Accessories Акcesoари	Page Стр.
5.	CA	Hinge Шарнирен крепеж	41
6.	CB	Hinge Шарнирен крепеж	42
7.	CMSS	Hinge with ball bearing Крепеж със сфер. лагер	42
8.	RCI	Sensor switch Датчик	45