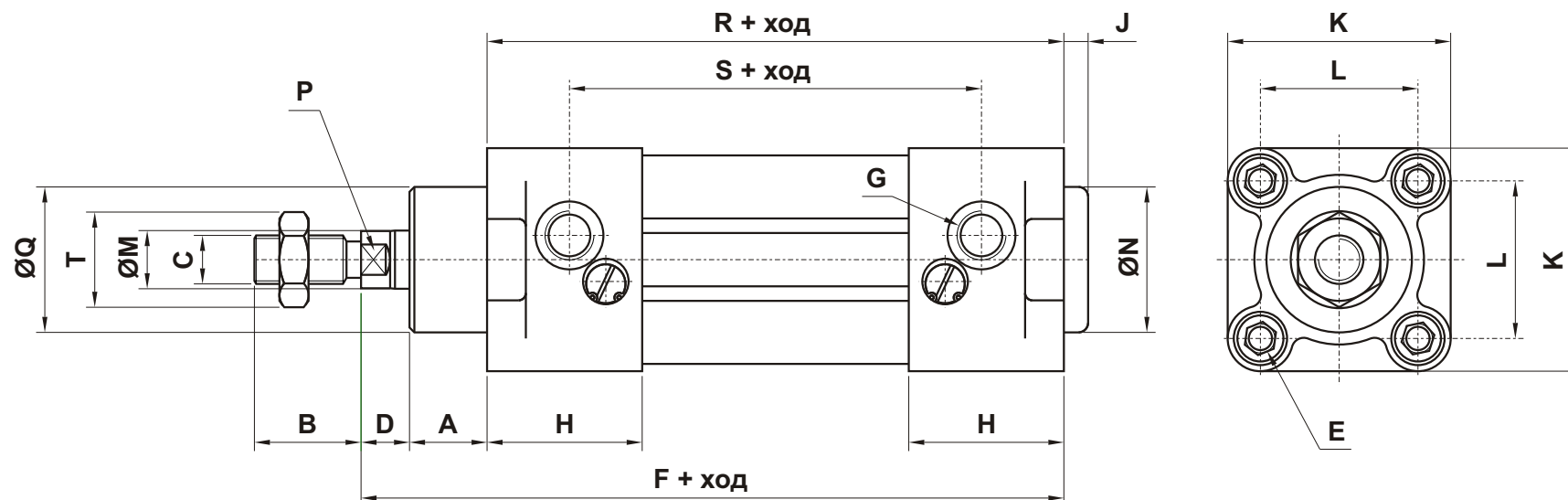


MCV серия

стандартни цилиндри, ISO 6431



Ø	A	B	C	D	E	F	G	H	J	K	L	M	N	P	Q	R	S	T
32	16	22	M10 X 1.25	10	M6 X 1.0	120	G 1/8"	26	4	47	32.5	12	30	10	30	94	68	17
40	20	24	M12 X 1.25	10	M6 X 1.0	135	G 1/4"	30	4	53	38	16	35	13	35	105	75	19
50	25	32	M16 X 1.5	12	M8 X 1.25	143	G 1/4"	30	4	65	46.5	20	40	16	40	106	76	24
63	25	32	M16 X 1.5	12	M8 X 1.25	158	G 3/8"	32	4	75	56.5	20	45	16	45	121	89	24
80	32	40	M20 X 1.5	14	M10 X 1.5	174	G 3/8"	38	4	95	72	25	45	21	45	128	90	30
100	35	40	M20 X 1.5	16	M10 X 1.5	189	G 1/2"	40	4	115	89	25	55	21	55	138	96	30